



EduTap

**RBI Grade A/B**

# **Test Series**

**Phase 2**

**#AspirantToOfficer**

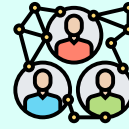


## What Will You Get



### Evaluate

1. **Solved Previous Year Questions:** To truly understand the scope and difficulty level of each subject.
2. **Chapter Wise Mock Tests:** To assess yourself after every chapter and see your strong and weak areas.
3. **Current Affairs Mock Tests:** To practice exam level current affairs based questions.
4. **Full Length Mock Tests:** Based on latest exam pattern and trend to simulate exam like environment.



### Connect

1. **Weekly Mentor Talk:** To get that much needed motivation dose from your favorite mentors.
2. **Discussion Forum:** To quickly resolve any subject related doubts that you encounter.
3. **Support Ticket:** To quickly resolve any technical issue that you are facing.
4. **Strategy Calls:** To connect with your favorite mentors and get your queries answered.
5. **Email + Phone Support:** To listen to you empathetically and answer every query of yours.





## Detailed Offerings

COMPONENTS	DELIVERABLES
General Awareness (Phase 1 and 2)	SchemesTap (PIB Integrated) MCQs
	ReportsTap (PIB Integrated) MCQs
	CurrentTap (PIB Integrated) MCQs
	RBI NewsTap MCQs
	Miscellaneous Reports MCQs
	Latest Union Budget MCQs
	Latest Economic Survey MCQs
	Banking Awareness MCQs
Economic and Social Issues + Finance and Management (Phase 2)	Chapter-Wise Mock Test (Objective)
	Chapter-Wise Model Q & A (Descriptive)
	Solved Previous Years Questions
Descriptive English (Phase 2)	Descriptive Fodder Material
	Solved Previous Years Questions
Full Length Mock Tests (Phase 2)	5 Full Length Mock Tests of Descriptive English
	5 Full Length Mock Tests of Finance & Management
	5 Full Length Mock Tests of Economic and Social Issues
Mentor Talk	Weekly Mentor Talk





## Frequently Asked Questions

### 1. I am already a subscriber of Gold/Silver/Crash course. Should I be buying this course?

The content in this course is already included in RBI Gold/Silver/Phase 1&2 Crash Course/Phase 2 Crash Course

### 2. What is the medium of instruction of this course?

Mock Tests for all components are in English language.

### 3. How many questions are there in total in this test series?

This test series has more than 7000 questions. For Phase 2, the paper is a mix of objective and descriptive, so the test series also contains MCQs as well as Descriptive tests.

### 4. Will I get explanations also for all questions?

Yes, an adequate and relevant explanation is provided for all the questions of the test series.

### 5. Does this test series cover current affairs?

Yes. Current Affairs for Phase 1 and 2 are covered in the course.

### 6. Will the course be updated to meet the requirements of the RBI Grade A exam?

Yes, the course will be updated in a timely manner to align with the requirements of the RBI Grade A exam.

### 7. What is the validity of this course?

The course expiry is mentioned next to the course thumbnail on the check-out page. Please check there.

### 8. How Can I Contact/Talk To Faculty If I Have Some Doubts?

We don't follow a "sell and forget" approach. We offer 3 robust support channels for all enrolled students: (i) A subject-wise Discussion Forum where doubts can be posted directly; (ii) Email us at [hello@edutap.co.in](mailto:hello@edutap.co.in) with your query and faculty/subject details, and (iii) Call us on +91-8146207241 (9 AM–6 PM) to request a mentorship or strategy session with the concerned faculty. We're here to guide you at every step of your preparation journey.



### 9. How many times can I attempt a Objective test ?

Each quiz on the portal can be retaken 2 times.

After the retake limit has been reached, you can see the questions, answers as well as explanations any number of times, there is no upper limit on that.

The retake limit has been set so as to avoid sharing of login credentials amongst students.

### 10. How many times can I attempt a Descriptive test ?

There would be only one attempt for descriptive test.

### 11. When will I receive my evaluated descriptive answer sheet along with the marks?

You will receive your evaluated answer sheet along with the marks within 72 hours.

### 12. Can I access this course on mobile (Android/iPhone), tablet (Android/iPad), laptop/desktop (Windows/MacBook), and how many devices can I use?

Yes! We follow the "learn anytime, anywhere" approach. On Android devices (mobile/tablet), download the EduTap app from the Play Store. On iPhone/iPad, download it from the App Store. Please note that only two devices can be used, and once you've logged in on two, you cannot log into a third device unless you log out from one of the existing ones. For laptop/desktop and MacBook, access the course via the latest versions of Chrome, Edge, or Safari browsers.

### 13. What are the system and browser requirements to access the course?

Web Browser: Windows 10+: Chrome, Edge; Mac Catalina+: Chrome, Edge, Safari; iOS 16+: Safari; Android 11+: Chrome

Mobile App: Android 10+

Other Platforms: Our content may work on Ubuntu (Chrome, Firefox, Brave) and lower versions of Android, iOS, and Mac, but we do not officially guarantee support for them. For the best experience, we recommend using the officially supported platforms listed above.



# RBI

## Meet Your Super Mentor



### Anchit Sir

Your Trusted Guide to Success



With your hard work and our guidance, your Super Mentor, along with their team, will be guiding you every step of the way. They will use proven strategies, clear guidance, and personal support to help you achieve your goals and make your dreams come true.

