



PFRDA Grade A

Test Series

Phase 1 + 2



What Will You Get

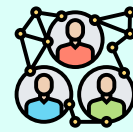
This test series focuses on all components of the PFRDA Grade A exam, helping you practise with exam-level questions and build the confidence you need to target the 2025 exam effectively.

Interview guidance including a mock interview with our expert panel is also a part of this pack, once you clear phase 2.



Evaluate

1. **Solved Previous Year Questions:** To truly understand the scope and difficulty level of the exam.
2. **Chapter-wise Tests:** To assess yourself after every chapter and see your strong and weak areas.
3. **Current Affairs Tests:** To practice exam level current affairs based questions.
4. **Full-length Tests:** Based on latest exam pattern and trend to simulate exam like environment.



Connect

1. **Weekly Mentor Talk:** To get that much needed motivation dose from your favorite mentors.
2. **Discussion Forum:** To quickly resolve any subject related doubts that you encounter.
3. **Support Ticket:** To quickly resolve any technical issue that you are facing.
4. **Strategy Calls:** To connect with your favorite mentors and get your queries answered.
5. **Email + Phone Support:** To listen to you empathetically and answer every query of yours.





Detailed Offerings

In the table below, we have mentioned the subject-wise deliverables of the Test Series for PFRDA Grade A exam.

Component	Feature
Quantitative Aptitude + Reasoning + English	Chapter-wise Tests
	Solved Previous Year Questions (Since 2017)
General Awareness	All-in-One Current Affairs Booster Magazine
	MCQs of Current Affairs
Descriptive English	Descriptive Fodder Material
	Solved PYQs (Since 2018)
Commerce and Accounts + Finance & Management + Costing + Companies Act + Economics	Chapter-wise Tests
	Solved Previous Year Questions (Since 2020)
Pension Sector	Chapter-wise Tests
	Solved Previous Year Questions (Since 2021)
Full-length Tests - Phase 1	5 FLTs for Paper 1
	5 FLTs for Paper 2
Full-length Tests - Phase 2	5 FLTs for Paper 1
	5 FLTs for Paper 2

Note: The Live Class Schedule will be updated later.





Frequently Asked Questions

1. Is this test series for the Phase 1 & 2 of PFRDA Grade A exam?

Yes. It is for the Phase 1 & 2 of PFRDA Grade A examination.

2. How many questions are there in total in this test series?

This test series has more than 10000 questions.

3. I am already a subscriber of Gold/Silver course. Should I be buying this course?

The content in this course is already included in PFRDA Gold. However if you are a subscriber of Silver course you already have the access to Phase 2 questions, but may buy this course to practice the questions for Phase 1 exam.

4. Will I get explanations also for all questions?

Yes, a detailed explanation is provided for all the questions of this test series.

5. Does this test series cover current affairs?

Yes. Current Affairs are covered in the course through MCQs

6. What is the medium of instruction of this course?

Descriptive Fodder Material of Descriptive English, Solved PYQs & Mocks for all components are in English language.

7. How many times can I watch a particular video lesson?

Infinite times - yes, you read it correct. We have placed no such restriction on the number of times you can watch a particular video lesson.



8. Can I access this course on mobile (Android/iPhone), tablet (Android/iPad), laptop/desktop (Windows/MacBook), and how many devices can I use?

Yes! We follow the "learn anytime, anywhere" approach. On Android devices (mobile/tablet), download the EduTap app from the Play Store. On iPhone/iPad, download it from the App Store. Please note that only two devices can be used, and once you've logged in on two, you cannot log into a third device unless you log out from one of the existing ones. For laptop/desktop and MacBook, access the course via the latest versions of Chrome, Edge, or Safari browsers.

9. How Can I Contact/Talk To Faculty If I Have Some Doubts?

We don't follow a "sell and forget" approach. We offer 3 robust support channels for all enrolled students: (i) A subject-wise Discussion Forum where doubts can be posted directly; (ii) Email us at hello@edutap.co.in with your query and faculty/subject details, and (iii) Call us on +91-8146207241 (9 AM–6 PM) to request a mentorship or strategy session with the concerned faculty. We're here to guide you at every step of your preparation journey.

10. What are the system and browser requirements to access the course?

Web Browser: Windows 10+: Chrome, Edge; Mac Catalina+: Chrome, Edge, Safari; iOS 16+: Safari; Android 11+: Chrome

Mobile App: Android 10+

Other Platforms: Our content may work on Ubuntu (Chrome, Firefox, Brave) and lower versions of Android, iOS, and Mac, but we do not officially guarantee support for them. For the best experience, we recommend using the officially supported platforms listed above.

Please note: Our courses are not supported on any third-party software or browser extensions

11. What is the validity of this course?

The course expiry is mentioned next to the course thumbnail on the check-out page. Please check there.



PFRDA

Meet Your Super Mentor



Anchit Sir

Your Trusted Guide



With your hard work and our guidance, your Super Mentor, along with their team, will be guiding you every step of the way. They will use proven strategies, clear guidance, and personal support to help you achieve your goals and make your dreams come true.

